

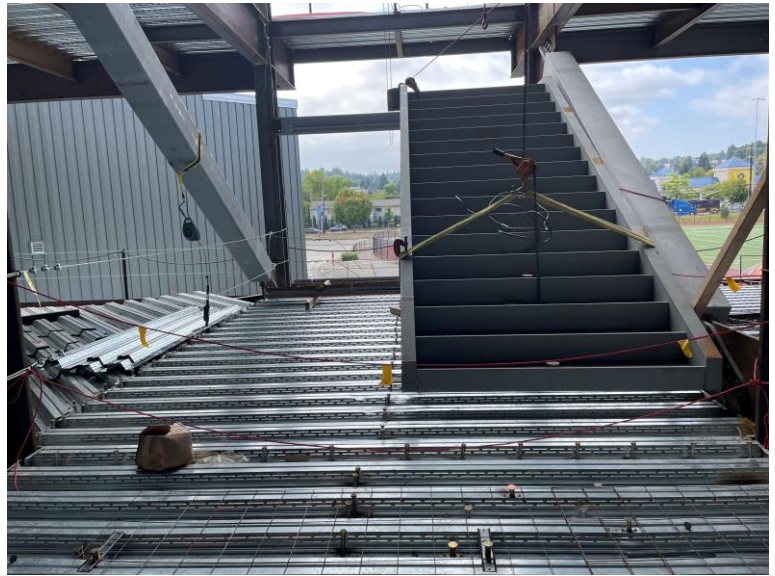
Lessons Learned

Date: 9/5/2023	Region: Coastal
Project: Rainer Beach High School	Incident Title: Trust <i>but</i> Verify

Summary

Apollo was asked to work in an area under a suspended load. The load was suspended with chain hoists but had 4 bolts connected on the back. The General Contractor Superintendent, and Iron Worker Foreman stated that the bolts would hold if the chains were to fail, and it was deemed safe. Apollo asked for proof of engineering and did not receive it. Despite the General Contractor's assurance that the bolts would hold the stairs in the event of a failure, when the Safety Manager from the General Contractor pushed on the stairs, it began to wobble excessively. The General Contractor took accountability by immediately placing of danger tape around the area.

Picture



What Went Right?

- Foreman for Apollo Stopped work after being told the area was safe
- Apollo Safety team was able to quickly make it to site to support the field team
- GC team was responsive once proof of unsafe conditions were shared

What Went Wrong?

- Misrepresentation of site conditions to Apollo
- Multiple sources stating that the area was safe, however, when tested it failed
- There were additional overhead hazards that needed to be cleared prior to Apollo entering the area.
- The user manual for the chain host specifically mentions not working beneath suspended loads.

Lessons Learned

- Trusting the General contractor and subject matter experts is a good place to start. However, if your own personal instincts and experience send red flags it's always best to verify those conditions yourself.
- Apollo's safety team will support field teams when they utilize their stop work authority.
- Utilizing Stop work authority can prevent potentially dangerous situations.