

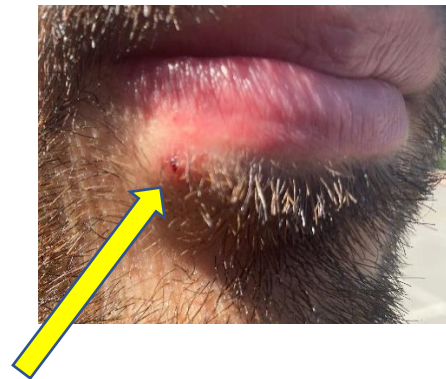
Lessons Learned

Date: 5/15/2023 Region: Southern
 Project: JB 1053 Tool Install Ronler Incident Title: Chipped Tooth by Wrench

Summary

Tool Install Pipe Fitter was loosening a nut on a 1/2" VCR fitting, the wrench hit worker in the lip. The wrench hit his lip and chipped the second tooth from the middle. (Open end wrench)

Picture



What Went Right?

- Reported incident when it happened.
- Foreman made sure worker was taken care of.

What Went Wrong?

- Wrench was pulled toward the face.
- Task changed from line pull to loosening the nut on the 1/2" VCR fitting.
- The worker was an apprentice and training on how to use open end wrench wasn't verified.

Lessons Learned

- Make sure your apprentices are trained on how to use the tools correctly. Make sure you plan the work and communicate with each team member.
- When the plan changes stop and regroup before the work starts.