

Lessons Learned

Date: 2/1/2021

Region: P-Division

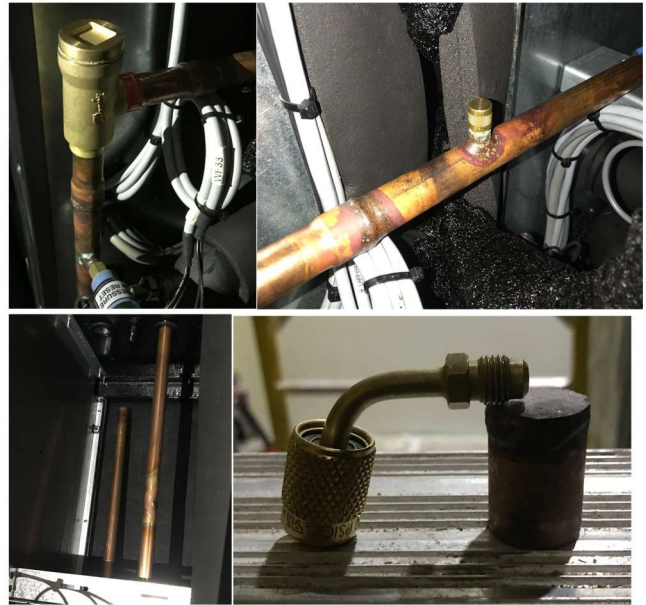
Project: PGE Trident

Incident Title: Trust but Verify

Summary

A worker was preparing a CRAC unit for rough-in to the building. He had to cut off the line end caps, to do this. These lines typically arrive from the manufacturer with a maintenance pressure in them.

On the last cap, the line had a check valve in the closed position. As the cutter penetrated the pipe, the cap blew off and struck the worker's hand. The rest of the stub out pipe bent about 6 inches straight down due to the pressure release. The worker's hand was slightly bruised.



What Went Right?

- The PTP covered the potential for pressure release per AISH 44, Line Breaking.
- No serious bodily injury.
- There was no damage to facility.

What Went Wrong?

- Knowing that refrigerant lines typically arrive with a maintenance pressure, the crew believed that only low pressure would be encountered and did not follow the procedure correctly.
- A manufacturer's oversight created an unexpected pressure variance.
- A body part was in the line of fire.
- Worker was not experienced in this type of activity.

Lessons Learned

- **Following safety procedures helps us be prepared for the unexpected. It is easy to believe that every time we do the same task, we will not encounter a hazardous condition. This is complacency, and in this situation, it could have led to a much more serious incident or injury.**
- **Be aware that conditions may change without warning.**
- **Make sure that workers have the adequate level of experience to manage risk.**